

Disney Parks Blog

presents:

# Disney Paper Parks

## MYSTIC MANOR

Carousel Book

created by Stephanie Jazmines & Amy Young of



Walt Disney IMAGINEERING

#DisneyMagicMoments

#DisneyPaperParks



# Disney Paper Parks

#DisneyMagicMoments | #DisneyPaperParks

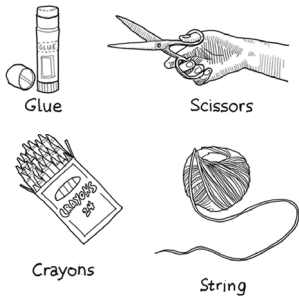
## HISTORY

Mystic Manor is the manor house and private museum of Lord Henry Mystic — eccentric adventurer, explorer and collector of art — and his faithful monkey friend, Albert. Mystic Manor was built as a museum for the growing collection of art and artifacts gathered by members of Lord Henry’s team, the Society of Explorers and Adventurers (S.E.A.).

Lord Henry’s ever-growing collection of illustrious art and artifacts includes a newly acquired relic: a beautifully carved Balinese music box said to make inanimate objects spring to life with its enchanting music dust.

Follow the mystical music dust as you embark on a mesmerizing tour of Mystic Manor, where age-old artifacts from nearly every corner of the world magically come alive!

## MATERIALS



## GUIDE

- Lines**
- Valley fold, fold in front
  - - - - - Mountain fold, fold behind
  - Cut
  - ..... X-ray or guide line.

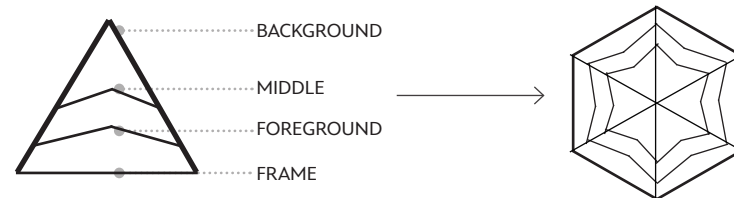
## MYSTIC MANOR CAROUSEL BOOK

Sheet Numbers: 1 - 19

## INSTRUCTIONS



1. Color all the sheets however you’d like!
2. There are 6 “scenes.” Each scene is constructed the same way. We recommend building each scene first and then gluing them all together!
3. For each scene: Cut out all the pieces. Glue tabs of each piece to the corresponding location on the Background piece. These locations are marked with a dotted line. Try to line up the edge of the fold with the dotted line. Each scene is organized like this:



4. When all 6 “scenes” are constructed, glue them together, back to back, as labeled on each sheet.
5. Before gluing the cover, cut 2 pieces of string or ribbon. One should be about 30” long and the other about 15” long. Apply glue to the back sides of Scene 1 and Scene 6 Backgrounds. Center the 30” ribbon perpendicular to the spine of the book.
6. Take the 15” ribbon and fold it in half. Lay it along the spine of the book so that the loop sticks out at least 2” on top. Make a big knot at the bottom of the spine to hold in place.
7. Glue the cover to the back, making sure the ribbons are sandwiched in between. Now you have a round pop-up book taking you through Mystic Manor!

Please Note: When cutting with scissors and working with any of the materials listed above, adult participation and supervision is recommended.



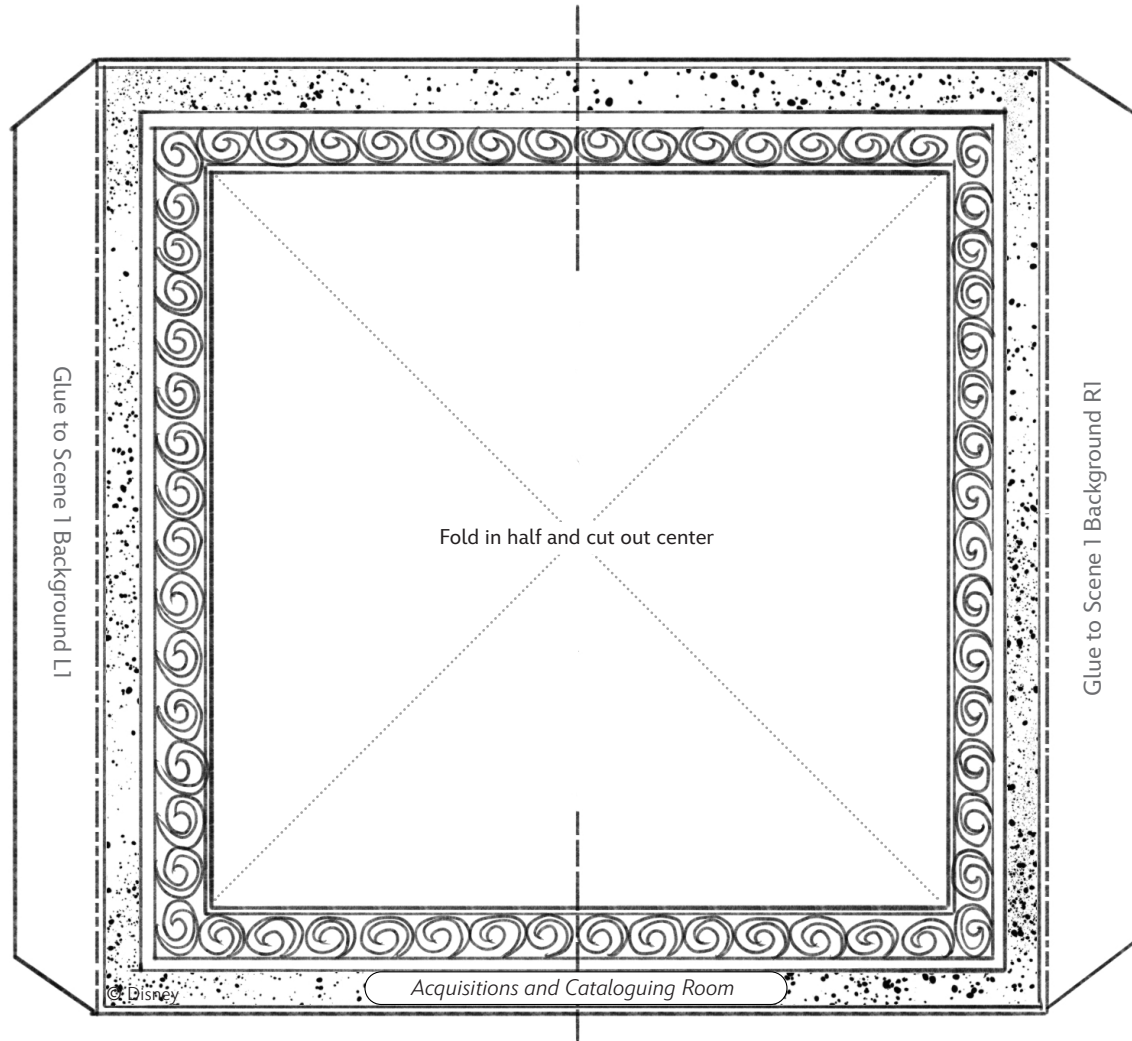
# Disney Paper Parks

#DisneyMagicMoments | #DisneyPaperParks

## MYSTIC MANOR

Sheet Number: 01

SCENE 1: ACQUISITIONS AND CATALOGUING ROOM



Scene 1 Frame



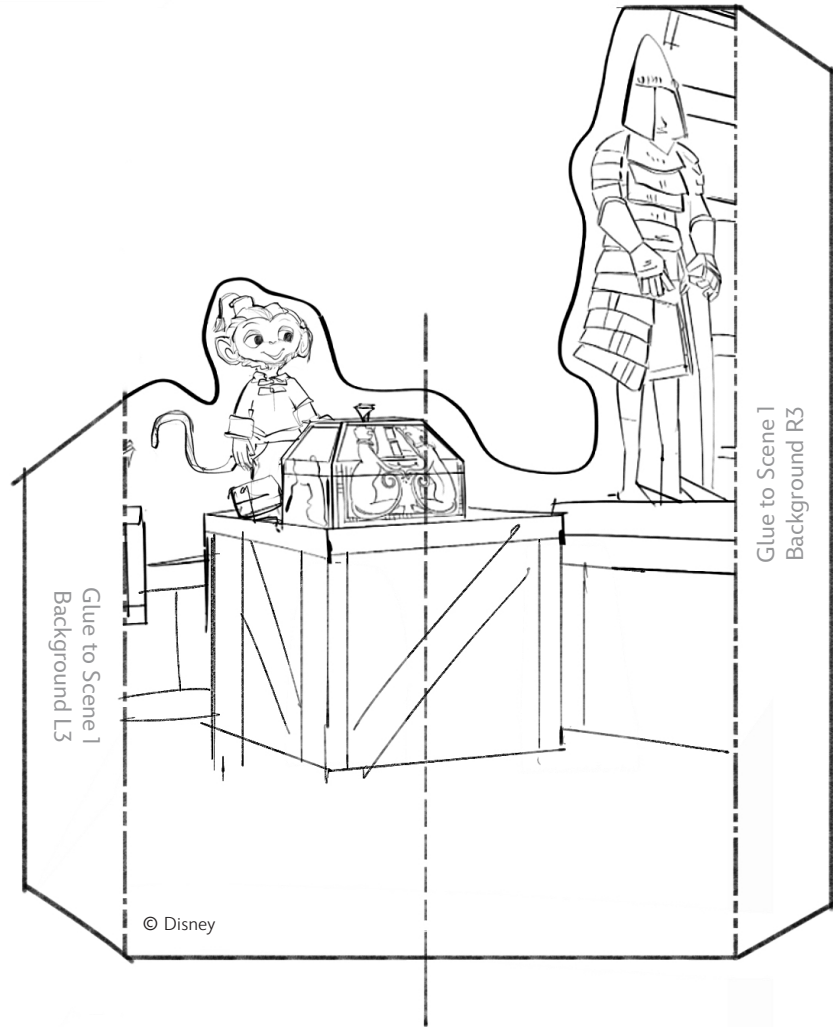
# Disney Paper Parks

#DisneyMagicMoments | #DisneyPaperParks

## MYSTIC MANOR

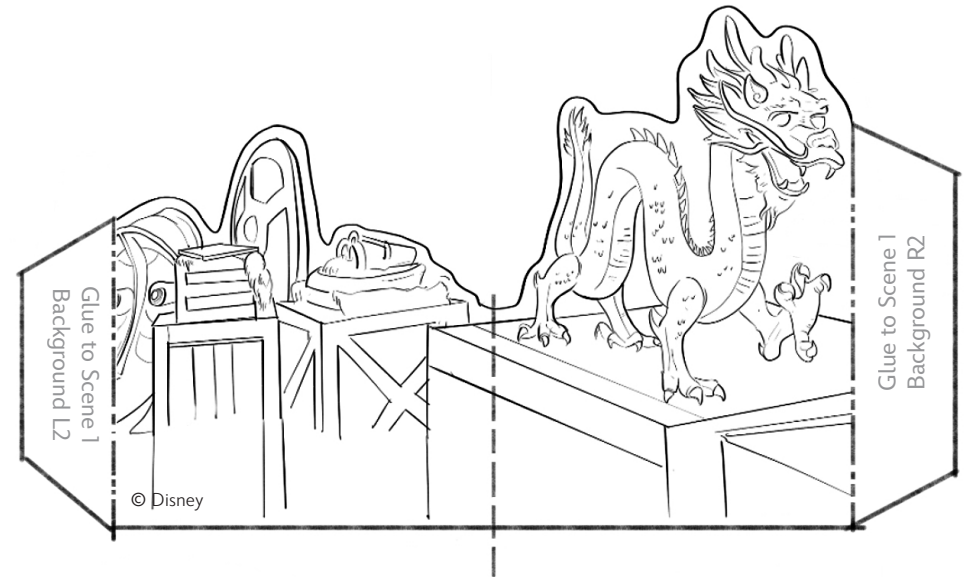
Sheet Number: 02

### SCENE 1: ACQUISITIONS AND CATALOGUING ROOM



Scene 1 Middle

Fold each piece in half and glue tabs to corresponding locations on Scene 1 Background



Scene 1 Foreground





# Disney Paper Parks

#DisneyMagicMoments | #DisneyPaperParks

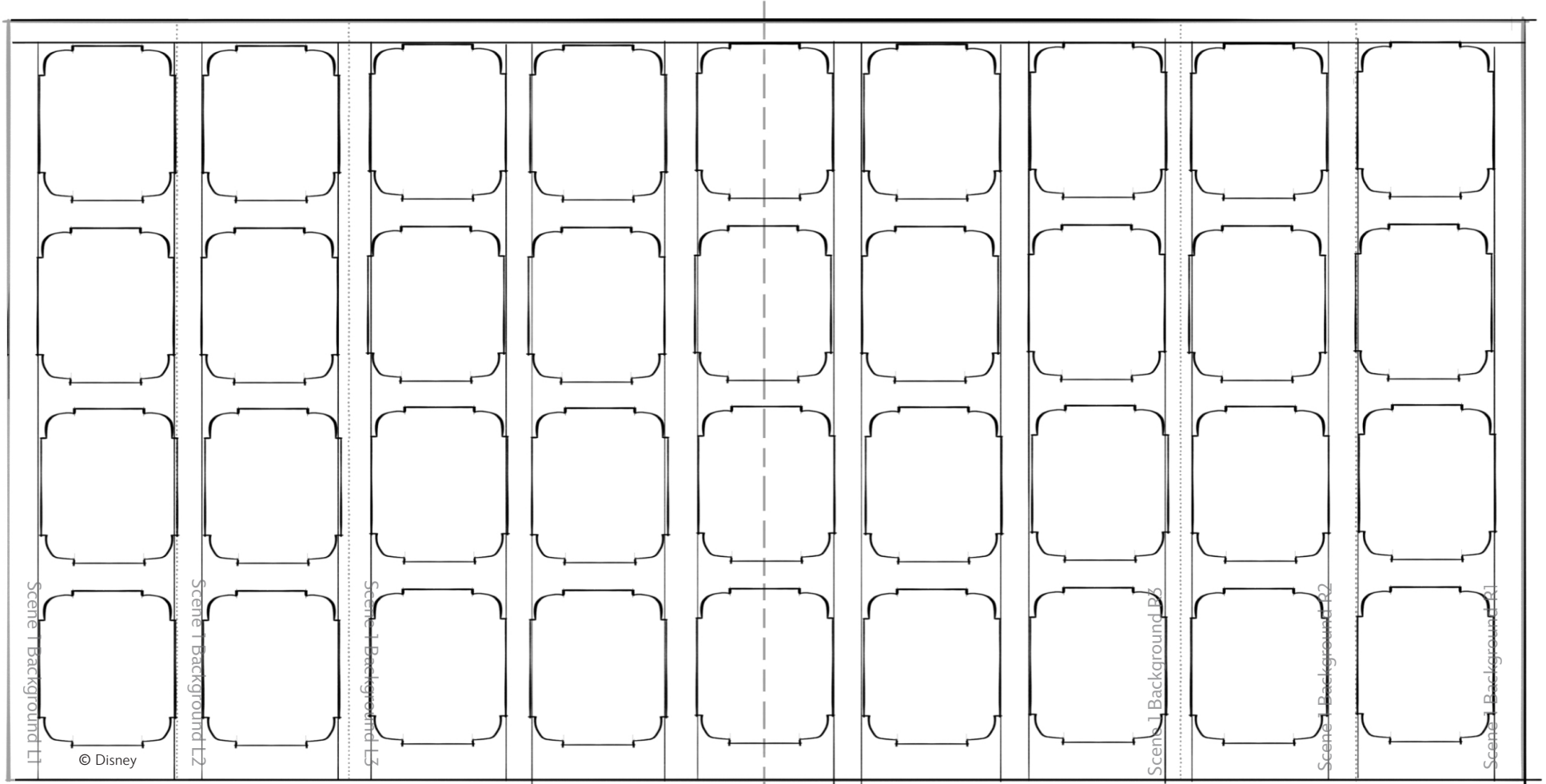
## MYSTIC MANOR

Sheet Number: 03

### SCENE 1: ACQUISITIONS AND CATALOGUING ROOM

Glue back to back of Book Cover (Right)

Glue back to back of Scene 2 Background (Left)



### Scene 1 Background

*Pro tip!:* Glue all the tabs of the Foreground, Middle and Frame first, then fold over, apply glue to the other tabs, and fold the Background piece on top!



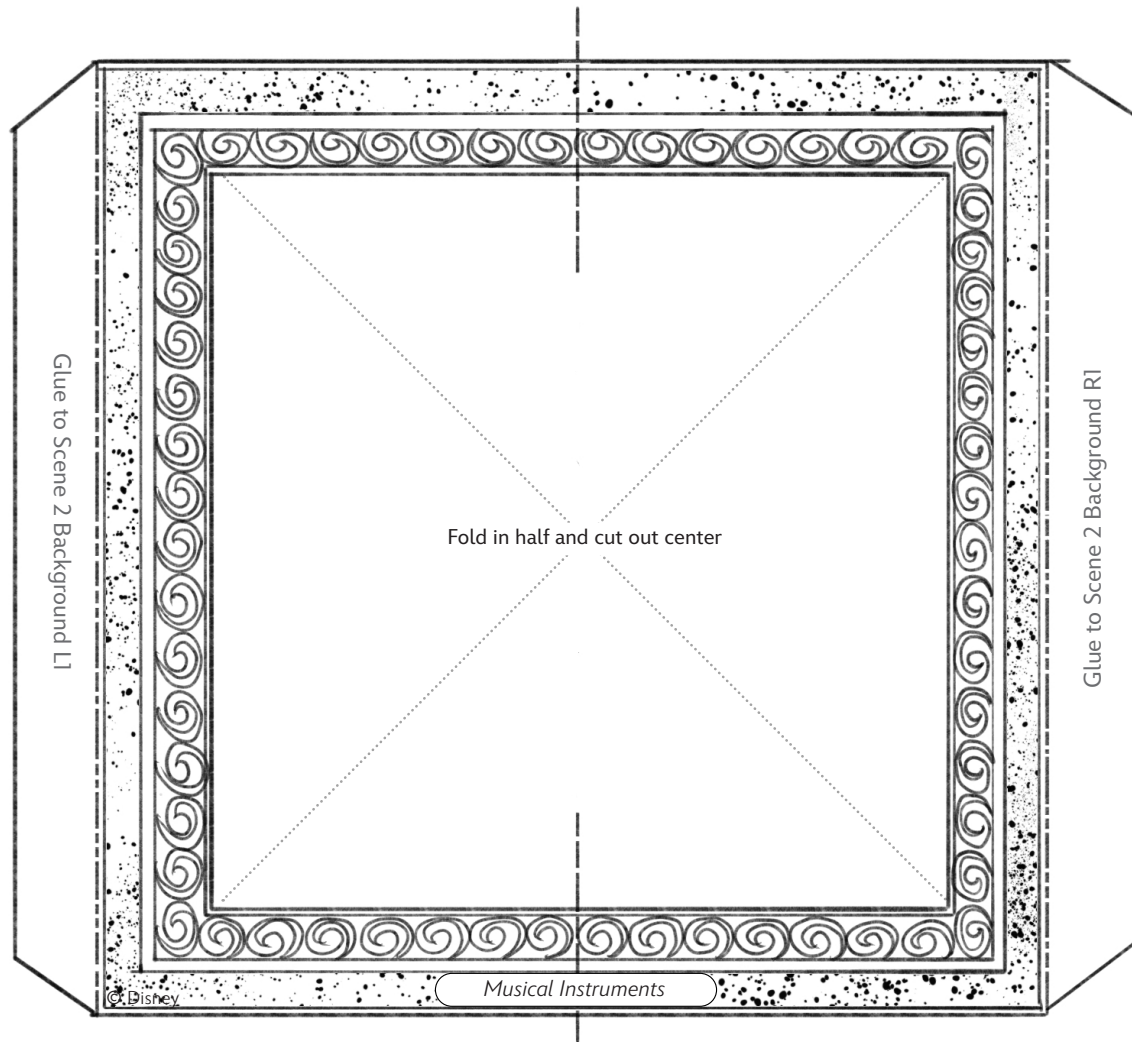
# Disney Paper Parks

#DisneyMagicMoments | #DisneyPaperParks

## MYSTIC MANOR

Sheet Number: 04

SCENE 2: MUSICAL INSTRUMENTS



Scene 2 Frame



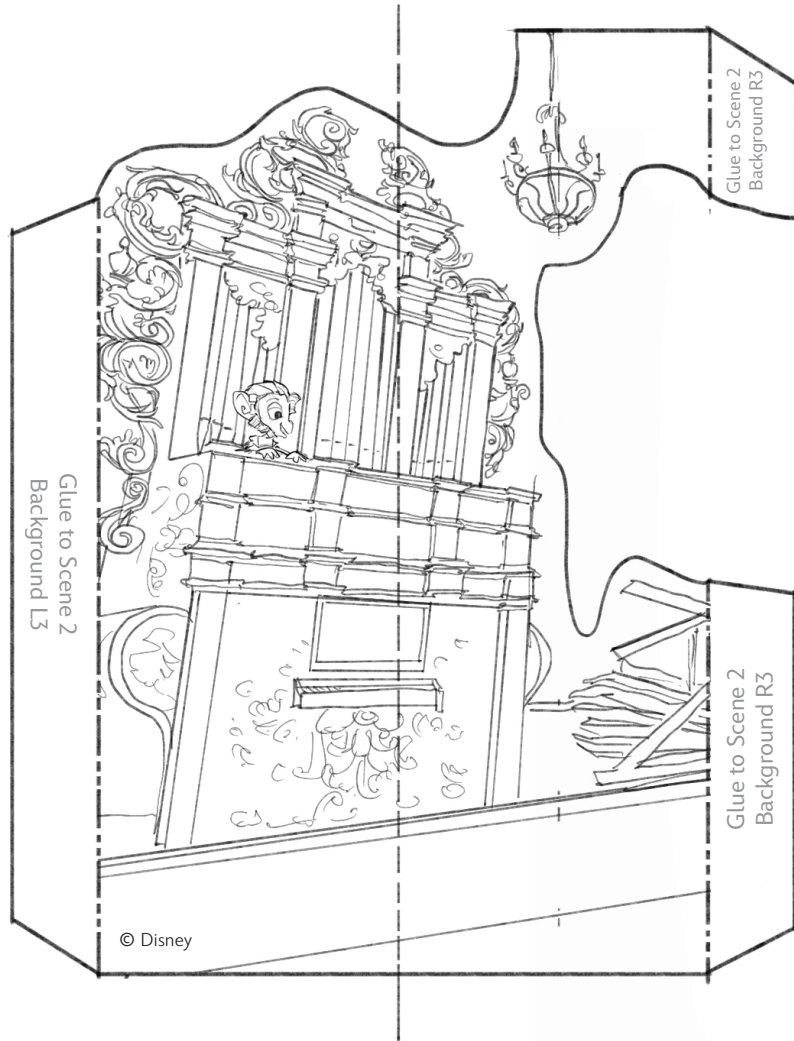
# Disney Paper Parks

#DisneyMagicMoments | #DisneyPaperParks

## MYSTIC MANOR

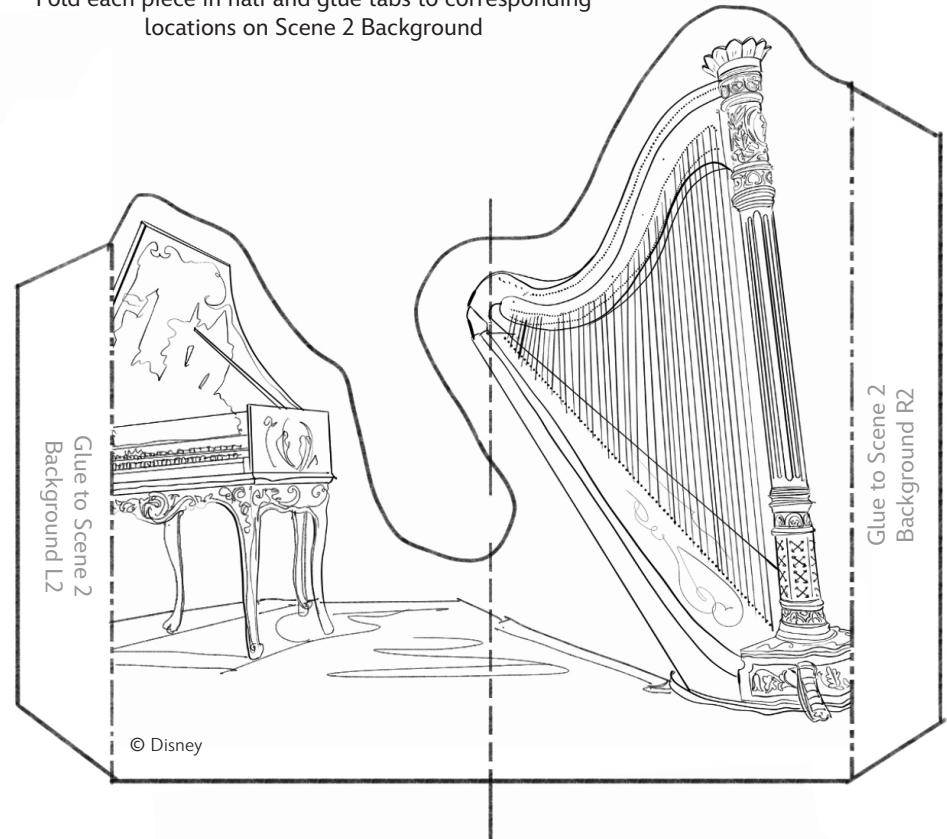
Sheet Number: 05

### SCENE 2: MUSICAL INSTRUMENTS



Scene 2 Middle

Fold each piece in half and glue tabs to corresponding locations on Scene 2 Background



Scene 2 Foreground



# Disney Paper Parks

#DisneyMagicMoments | #DisneyPaperParks

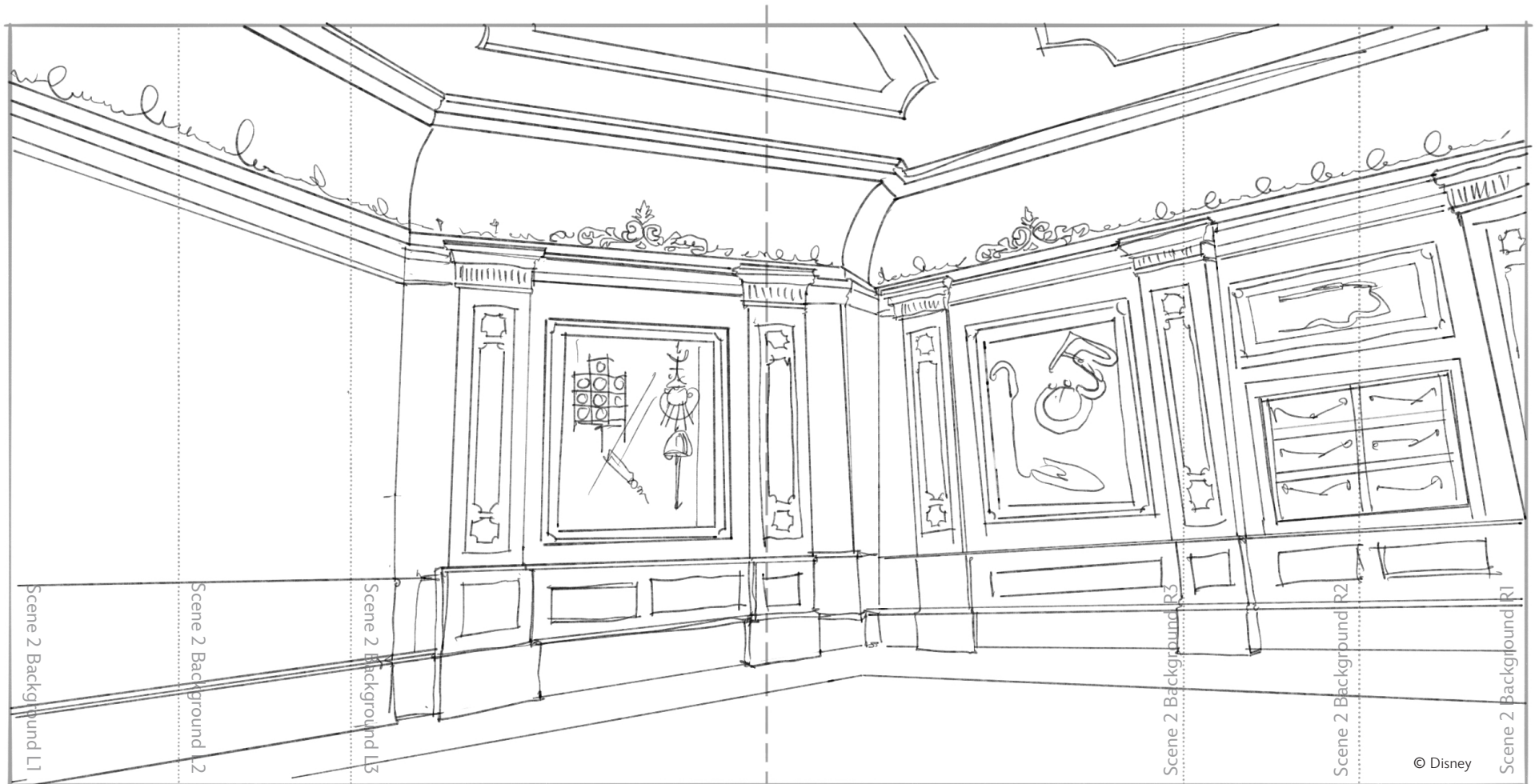
## MYSTIC MANOR

Sheet Number: 06

### SCENE 2: MUSICAL INSTRUMENTS

Glue back to back of Scene 1 Background (Right)

Glue back to back of Scene 3 Background (Left)



Scene 2 Background

*Pro tip!: Glue all the tabs of the Foreground, Middle and Frame first, then fold over, apply glue to the other tabs, and fold the Background piece on top!*





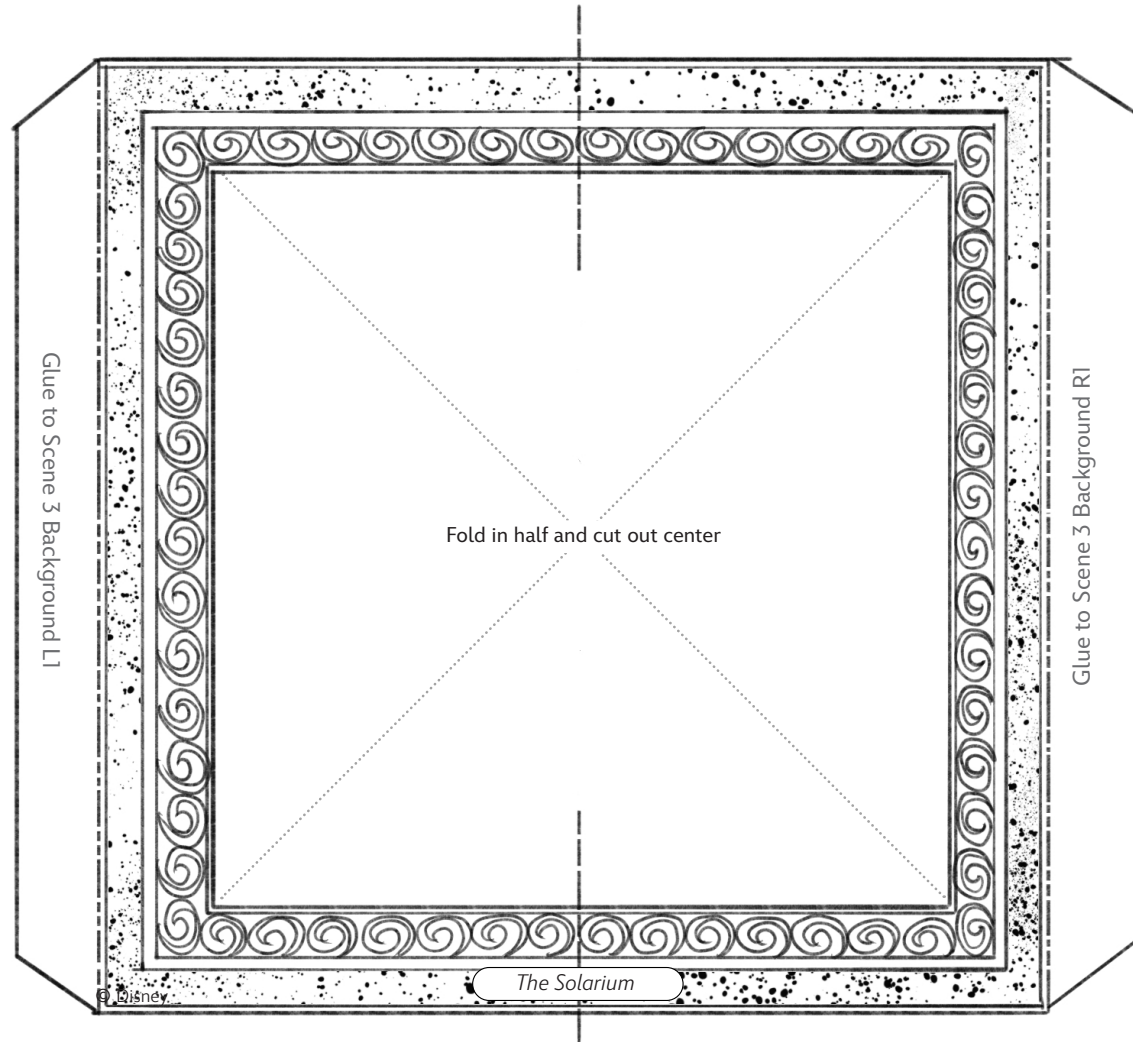
# Disney Paper Parks

#DisneyMagicMoments | #DisneyPaperParks

## MYSTIC MANOR

Sheet Number: 07

SCENE 3: THE SOLARIUM



Scene 3 Frame



# Disney Paper Parks

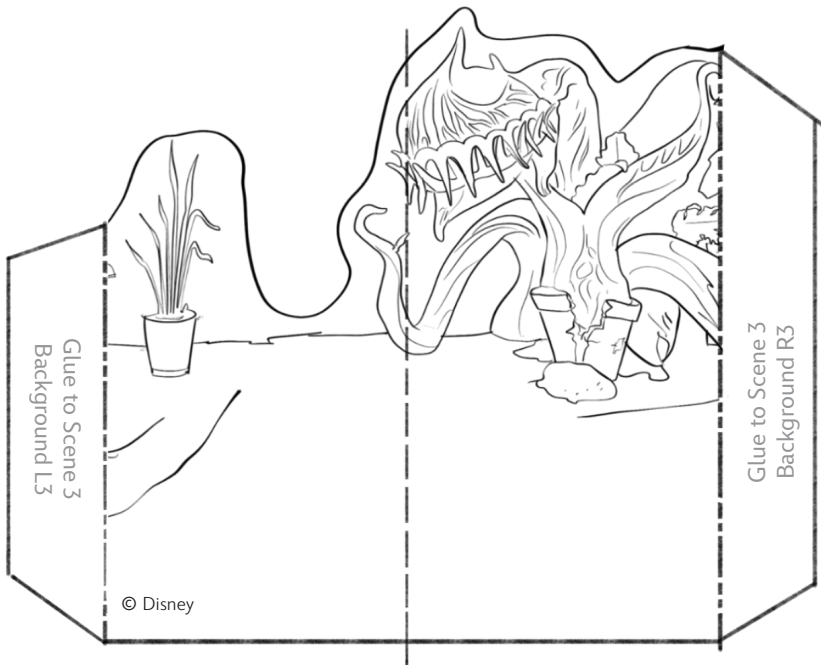
#DisneyMagicMoments | #DisneyPaperParks

## MYSTIC MANOR

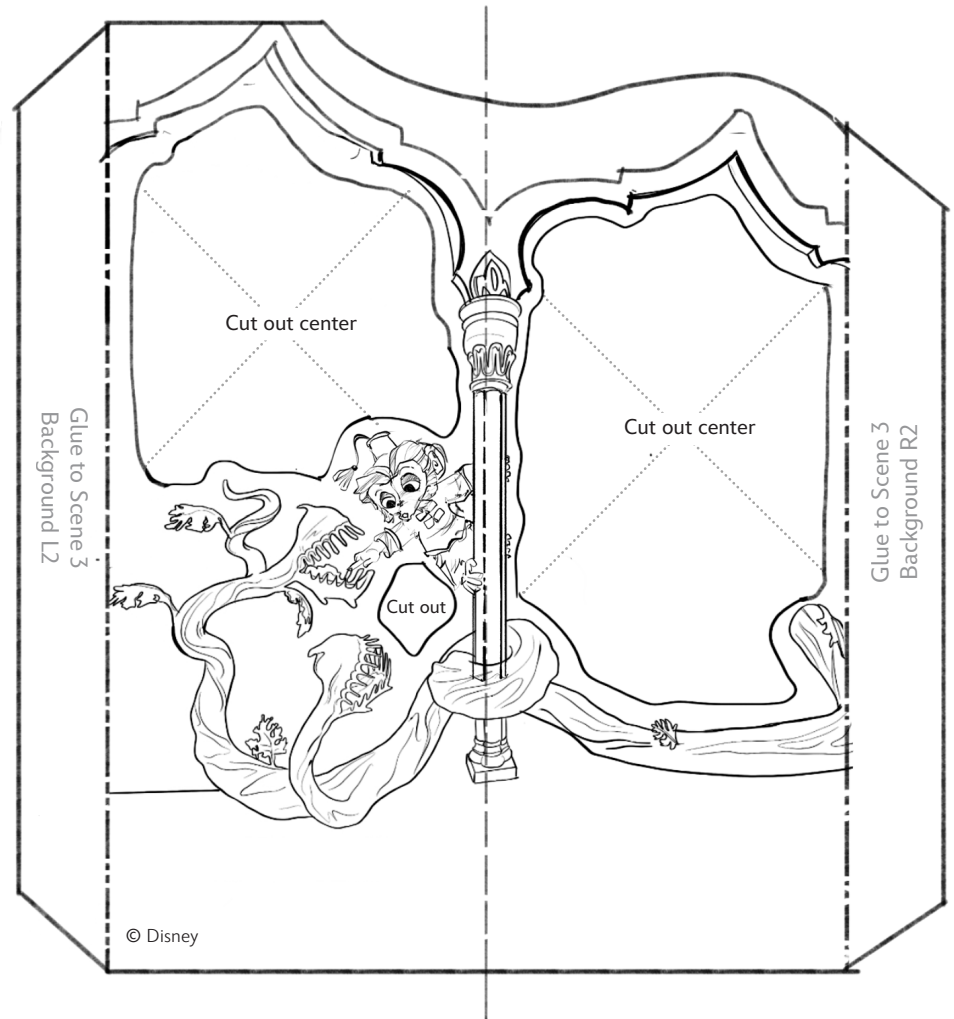
Sheet Number: 08

SCENE 3: THE SOLARIUM

Fold each piece in half and glue tabs to corresponding locations on Scene 3 Background



Scene 3 Middle



Scene 3 Foreground



# Disney Paper Parks

#DisneyMagicMoments | #DisneyPaperParks

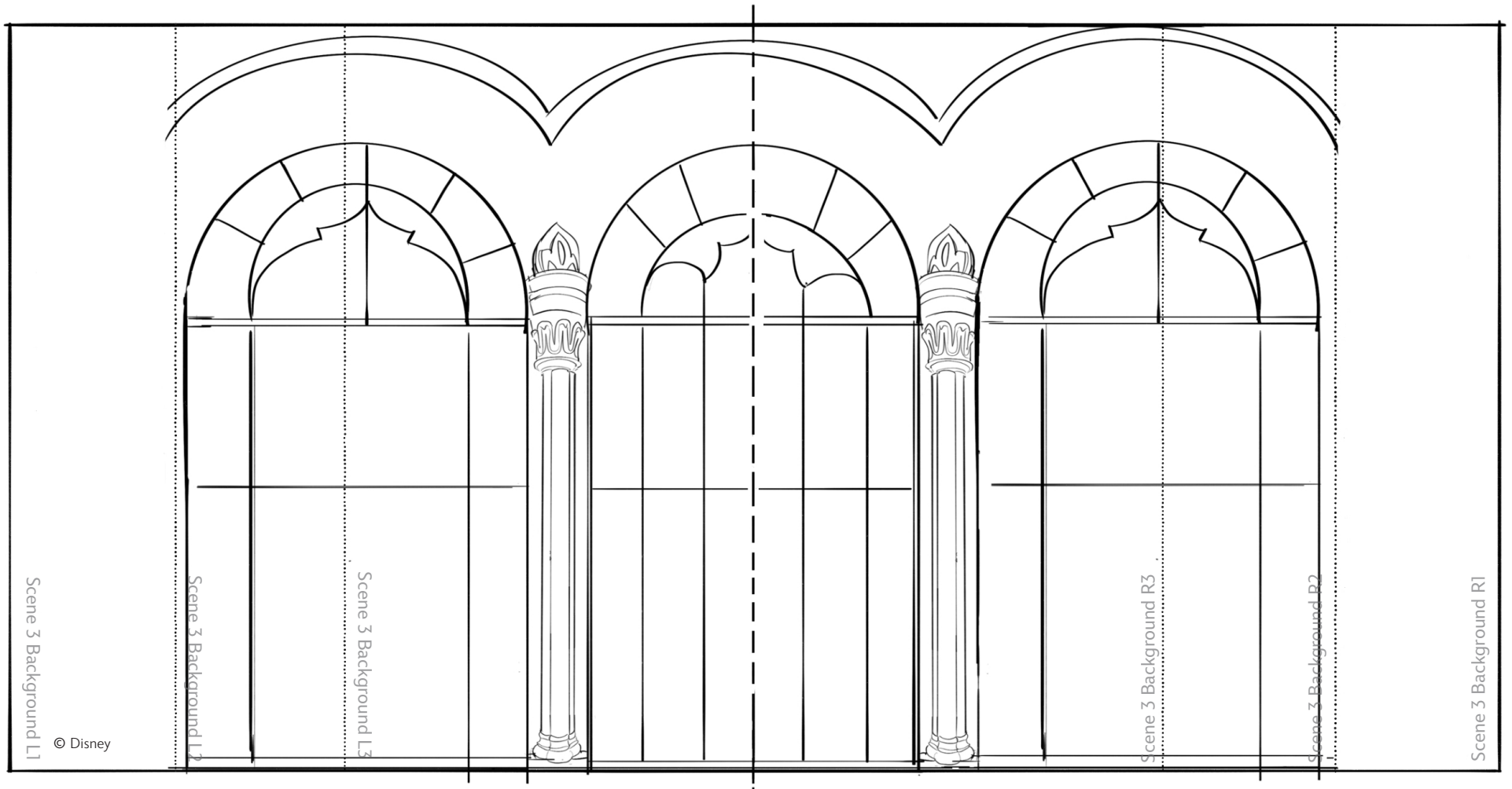
## MYSTIC MANOR

Sheet Number: 09

### SCENE 3: THE SOLARIUM

Glue back to back of Scene 2 Background (Right)

Glue back to back of Scene 4 Background (Left)



### Scene 3 Background

*Pro tip!: Glue all the tabs of the Foreground, Middle and Frame first, then fold over, apply glue to the other tabs, and fold the Background piece on top!*



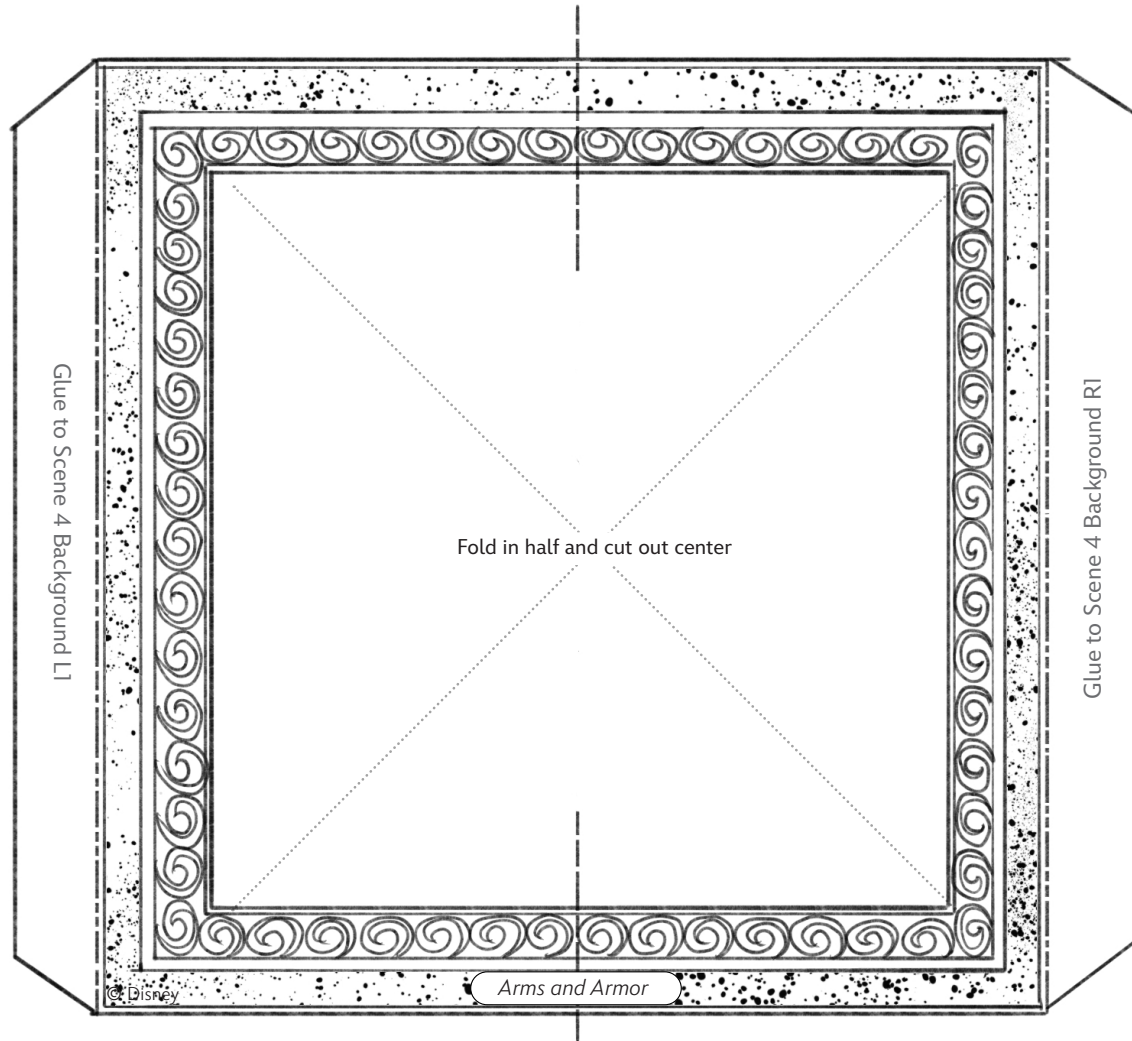
# Disney Paper Parks

#DisneyMagicMoments | #DisneyPaperParks

## MYSTIC MANOR

Sheet Number: 10

SCENE 4: ARMS & ARMOR



Scene 4 Frame





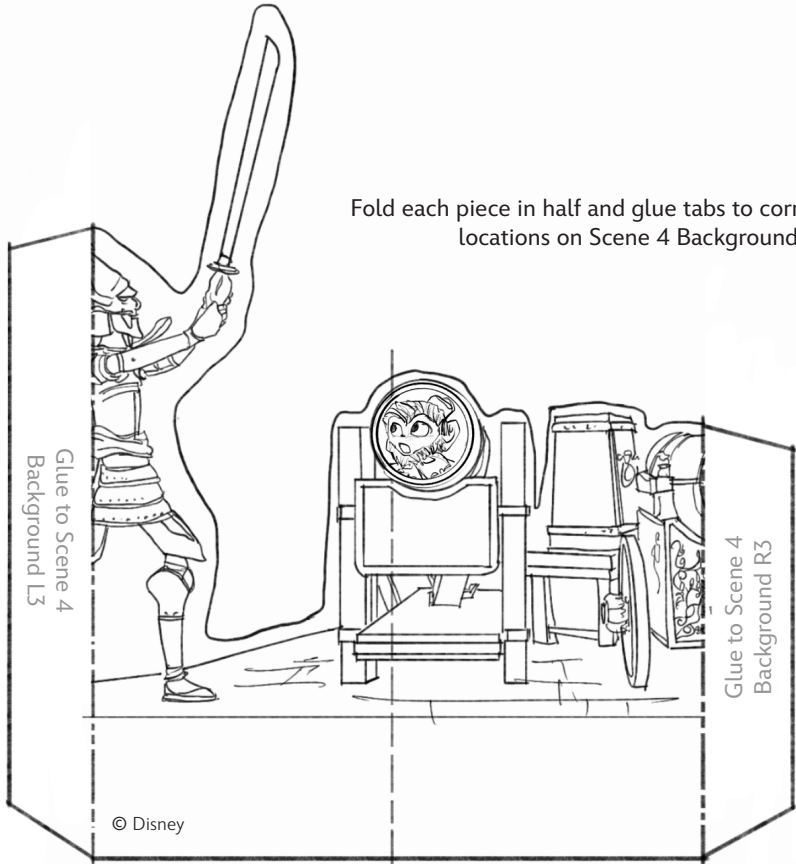
# Disney Paper Parks

#DisneyMagicMoments | #DisneyPaperParks

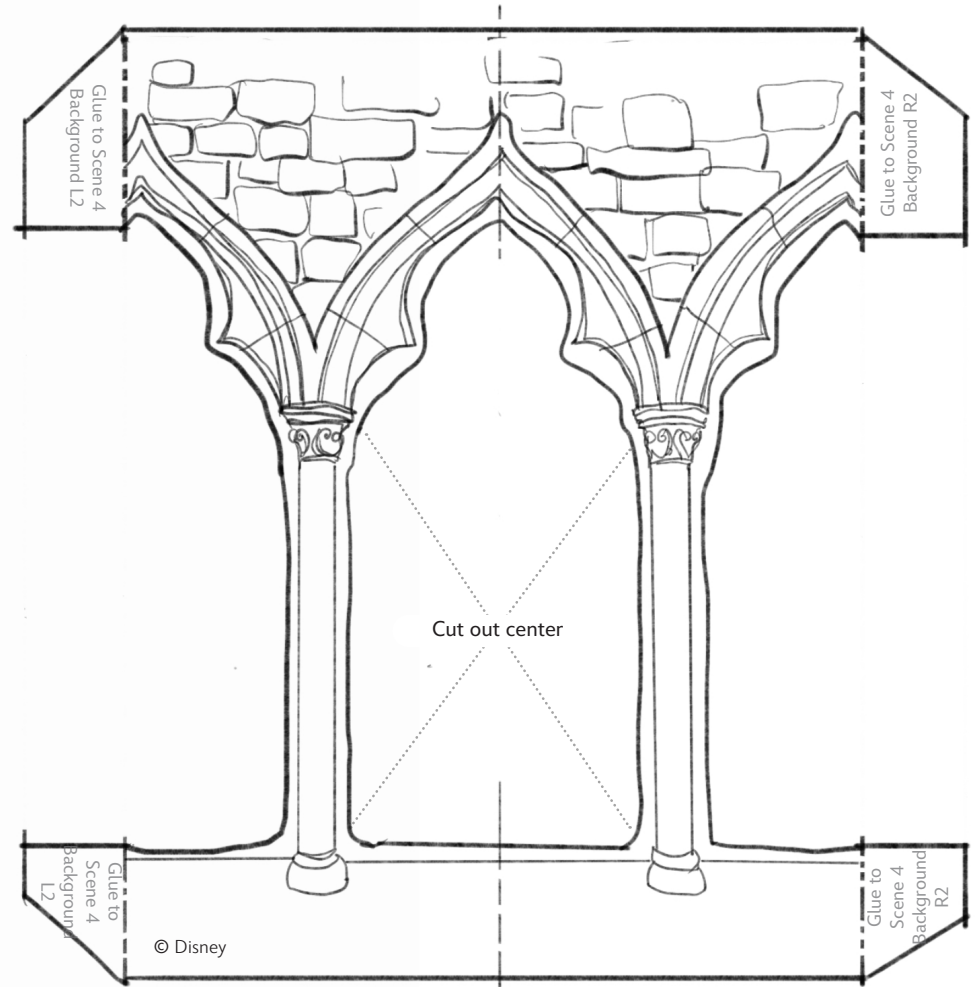
## MYSTIC MANOR

Sheet Number: 11

SCENE 4: ARMS & ARMOR



Scene 4 Middle



Scene 4 Foreground





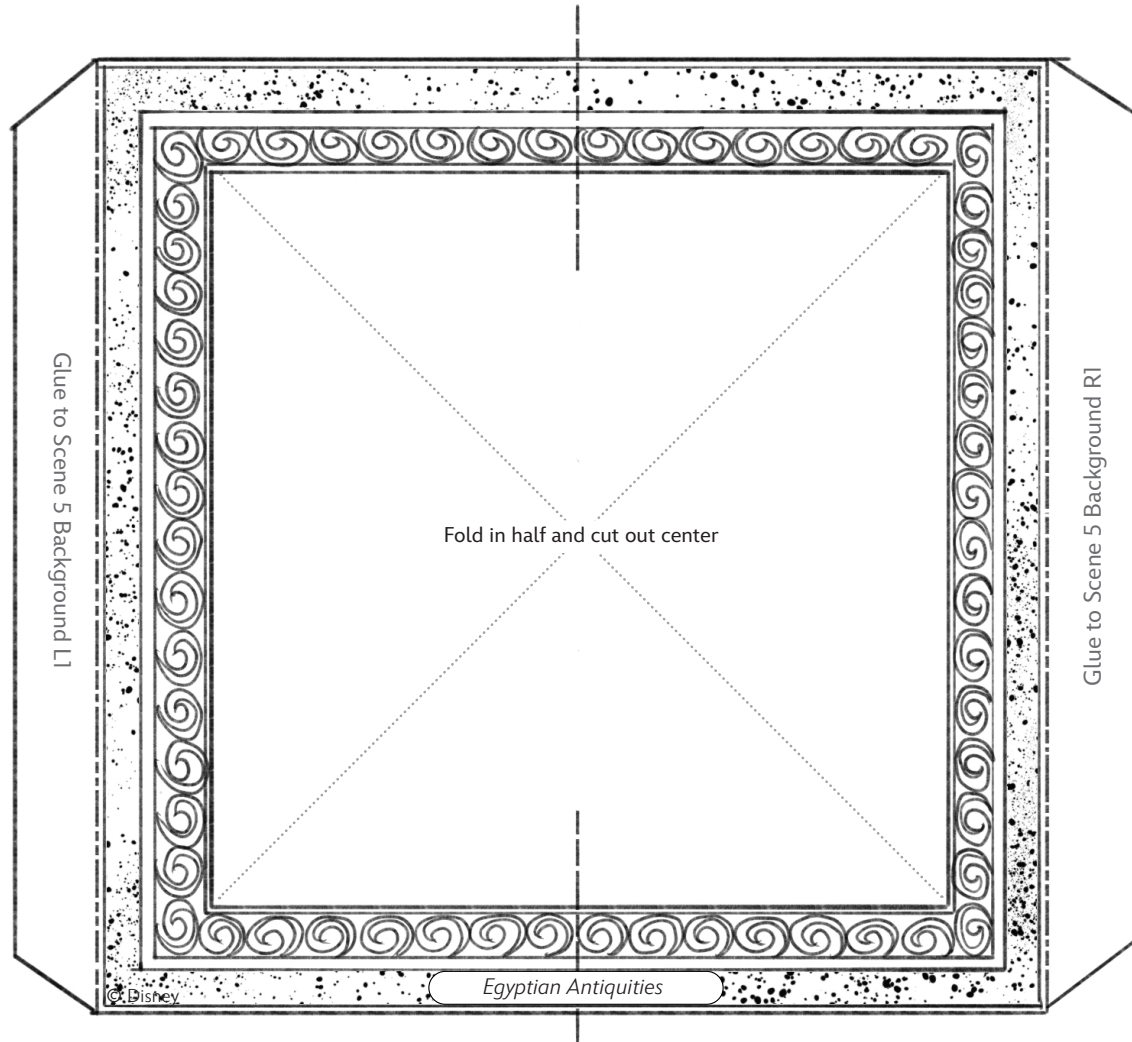
# Disney Paper Parks

#DisneyMagicMoments | #DisneyPaperParks

## MYSTIC MANOR

Sheet Number: 13

SCENE 5: EGYPTIAN ANTIQUITIES



Scene 5 Frame



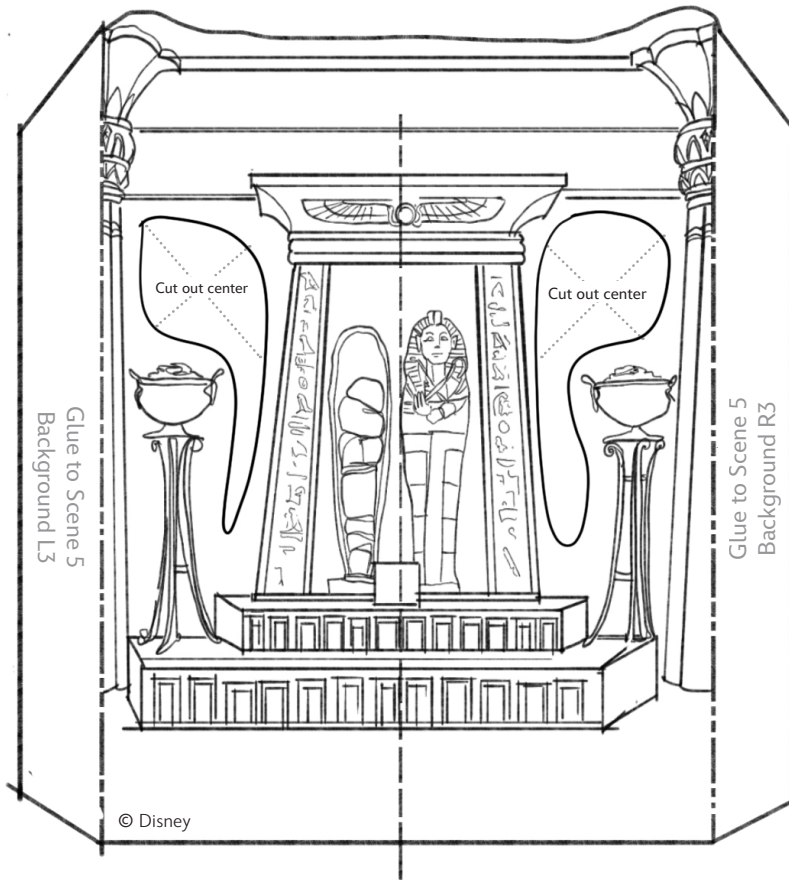
# Disney Paper Parks

#DisneyMagicMoments | #DisneyPaperParks

## MYSTIC MANOR

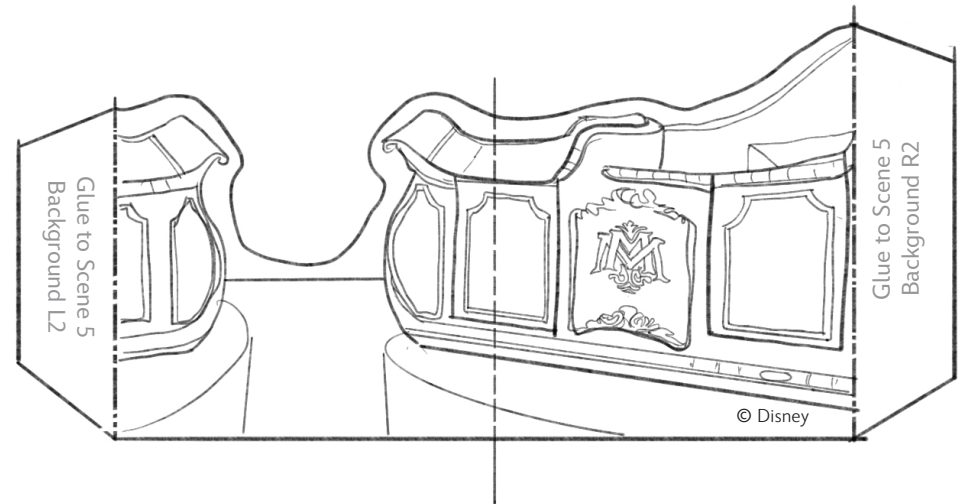
Sheet Number: 14

SCENE 5: EGYPTIAN ANTIQUITIES



Scene 5 Middle

Fold each piece in half and glue tabs to corresponding locations on Scene 6 Background



Scene 5 Foreground





# Disney Paper Parks

#DisneyMagicMoments | #DisneyPaperParks

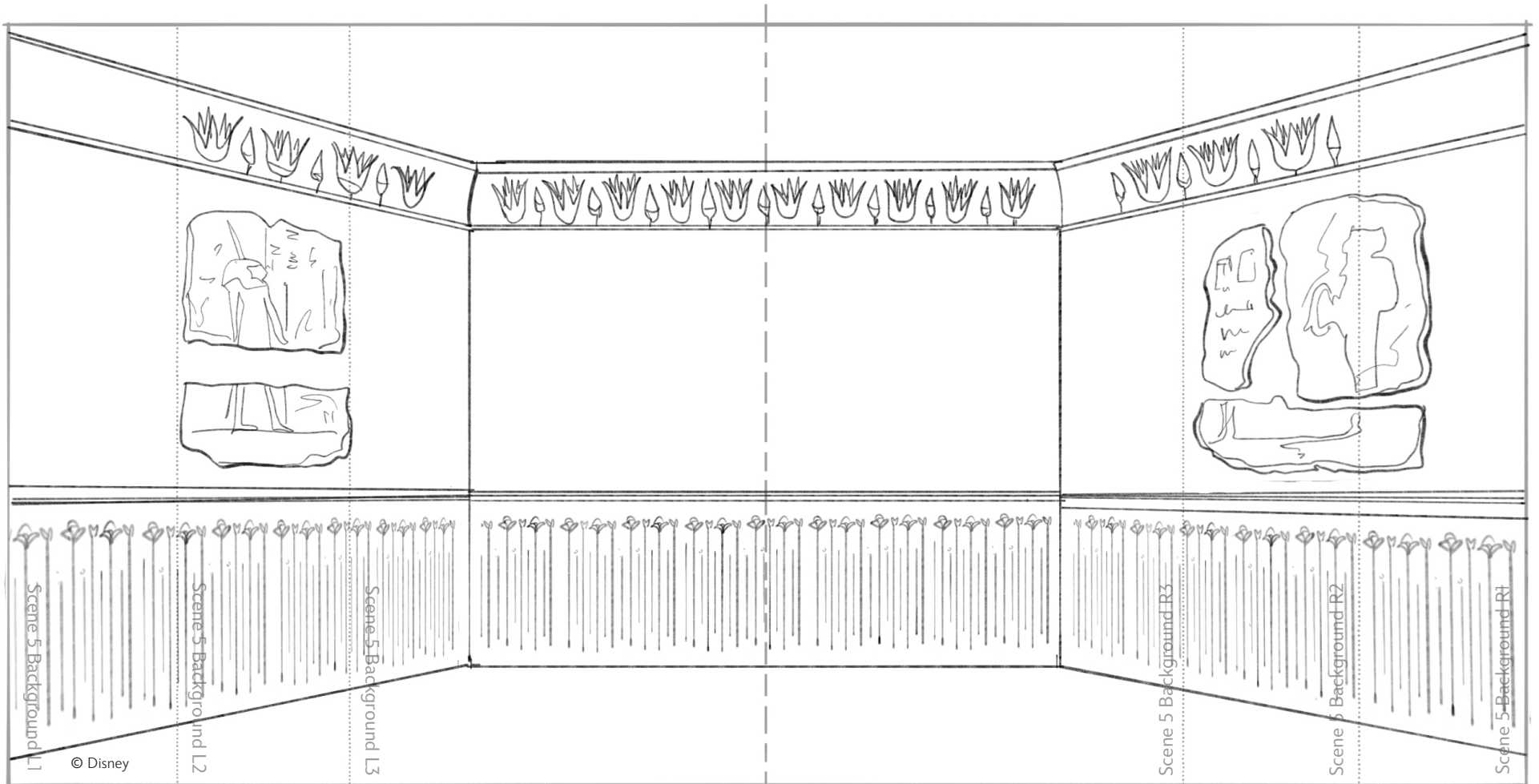
## MYSTIC MANOR

Sheet Number: 15

### SCENE 5: EGYPTIAN ANTIQUITIES

Glue back to back of Scene 4 Background (Right)

Glue back to back of Scene 6 Background (Left)



Scene 5 Background

*Pro tip!: Glue all the tabs of the Foreground, Middle and Frame first, then fold over, apply glue to the other tabs, and fold the Background piece on top!*



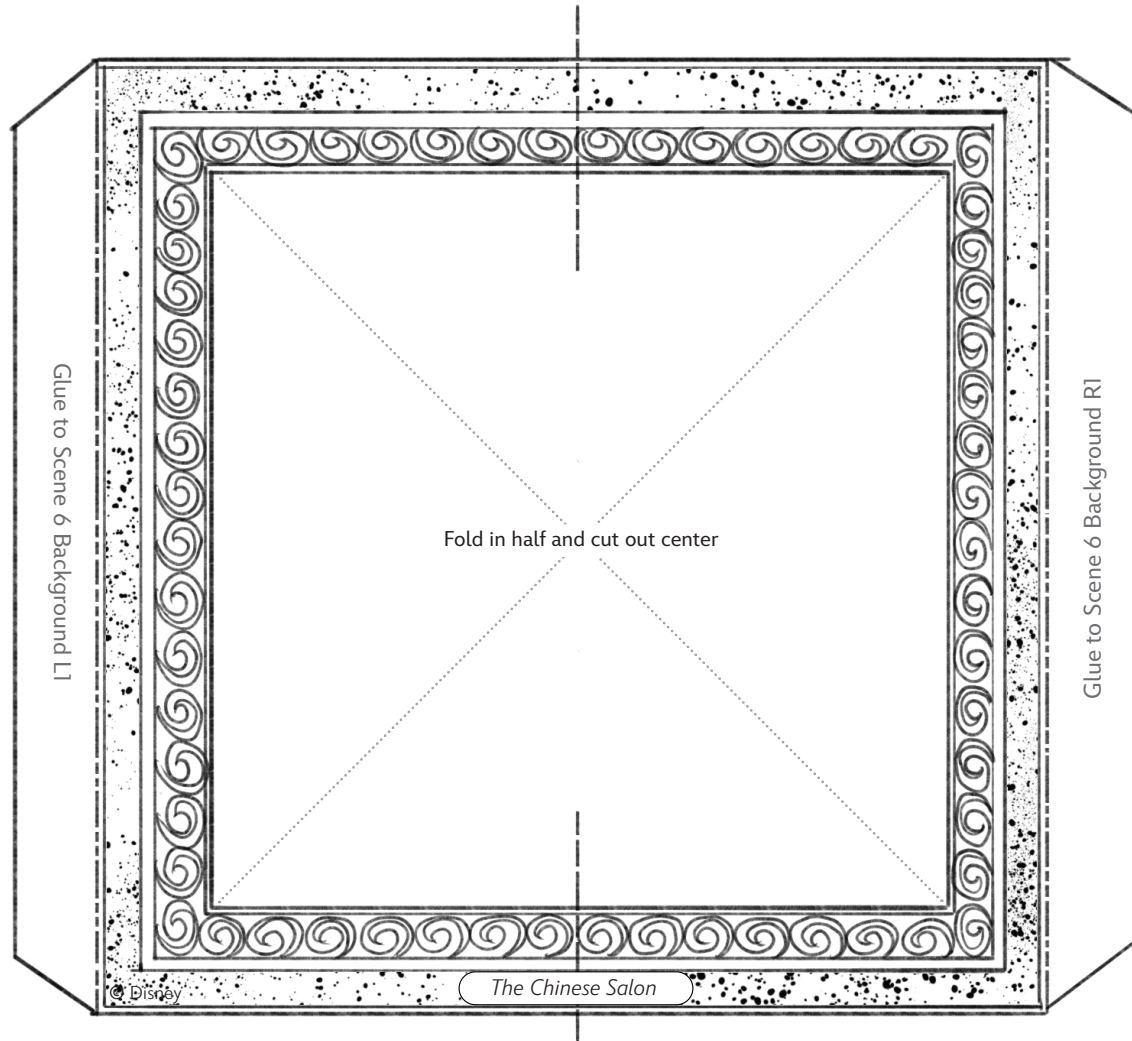
# Disney Paper Parks

#DisneyMagicMoments | #DisneyPaperParks

## MYSTIC MANOR

Sheet Number: 16

SCENE 6: THE CHINESE SALON



Scene 6 Frame



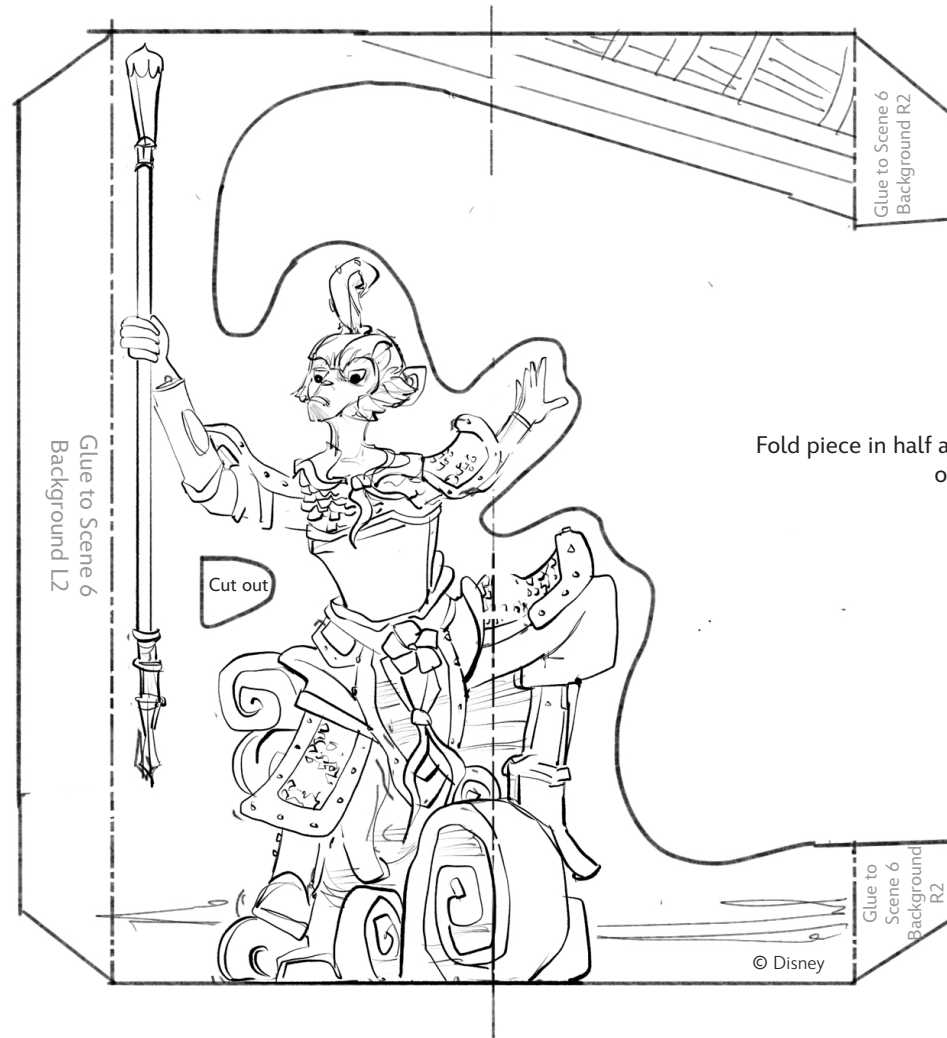
# Disney Paper Parks

#DisneyMagicMoments | #DisneyPaperParks

## MYSTIC MANOR

Sheet Number: 17

SCENE 6: THE CHINESE SALON



Fold piece in half and glue tabs to corresponding locations on Scene 6 Background

Scene 6 Foreground



# Disney Paper Parks

#DisneyMagicMoments | #DisneyPaperParks

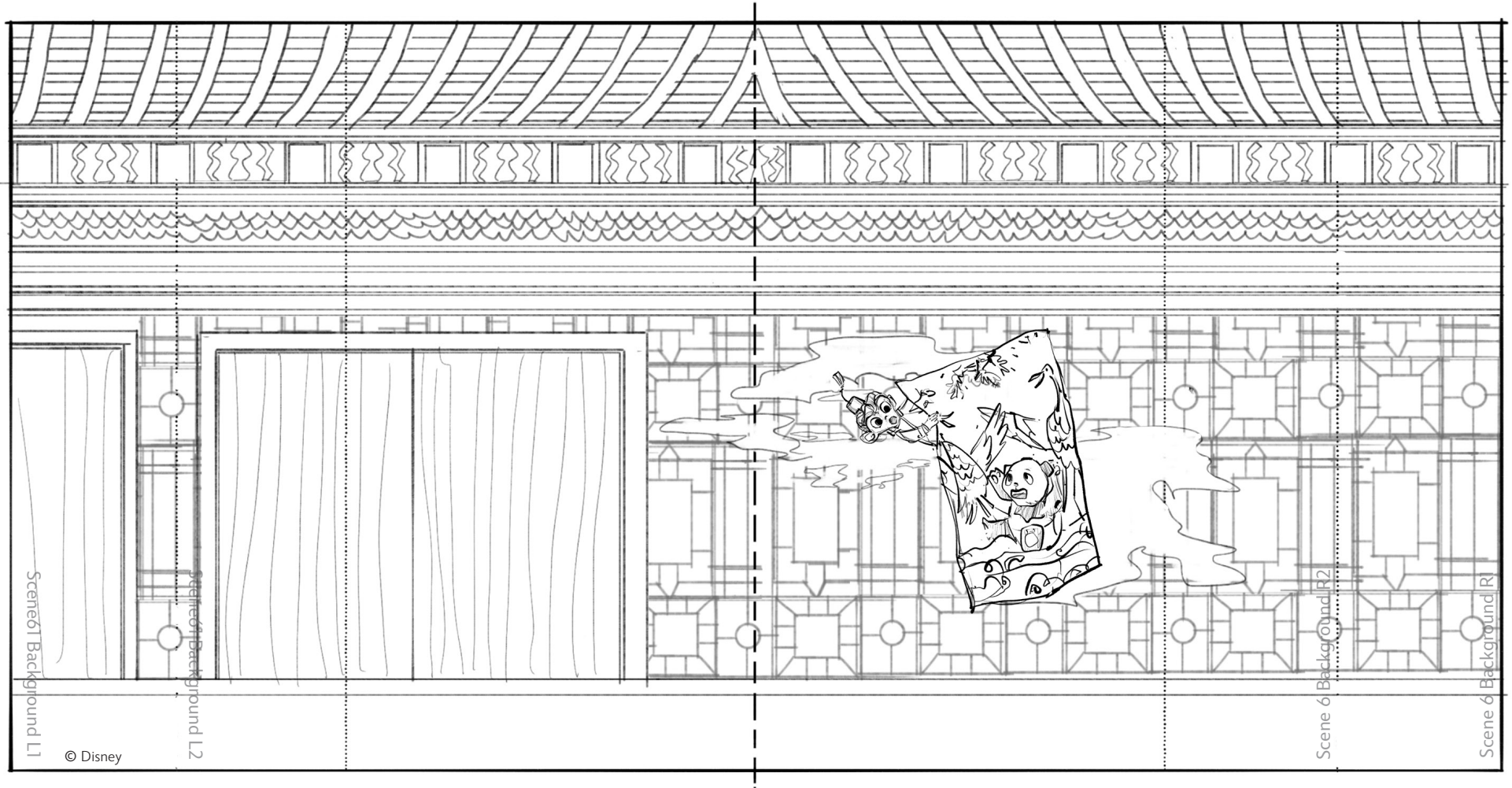
## MYSTIC MANOR

Sheet Number: 18

### SCENE 6: THE CHINESE SALON

Glue back to back of Scene 5 Background (Right)

Glue back to back of Book Cover (Left)



### Scene 6 Background

*Pro tip!: Glue all the tabs of the Foreground, Middle and Frame first, then fold over, apply glue to the other tabs, and fold the Background piece on top!*





# Disney Paper Parks

#DisneyMagicMoments | #DisneyPaperParks

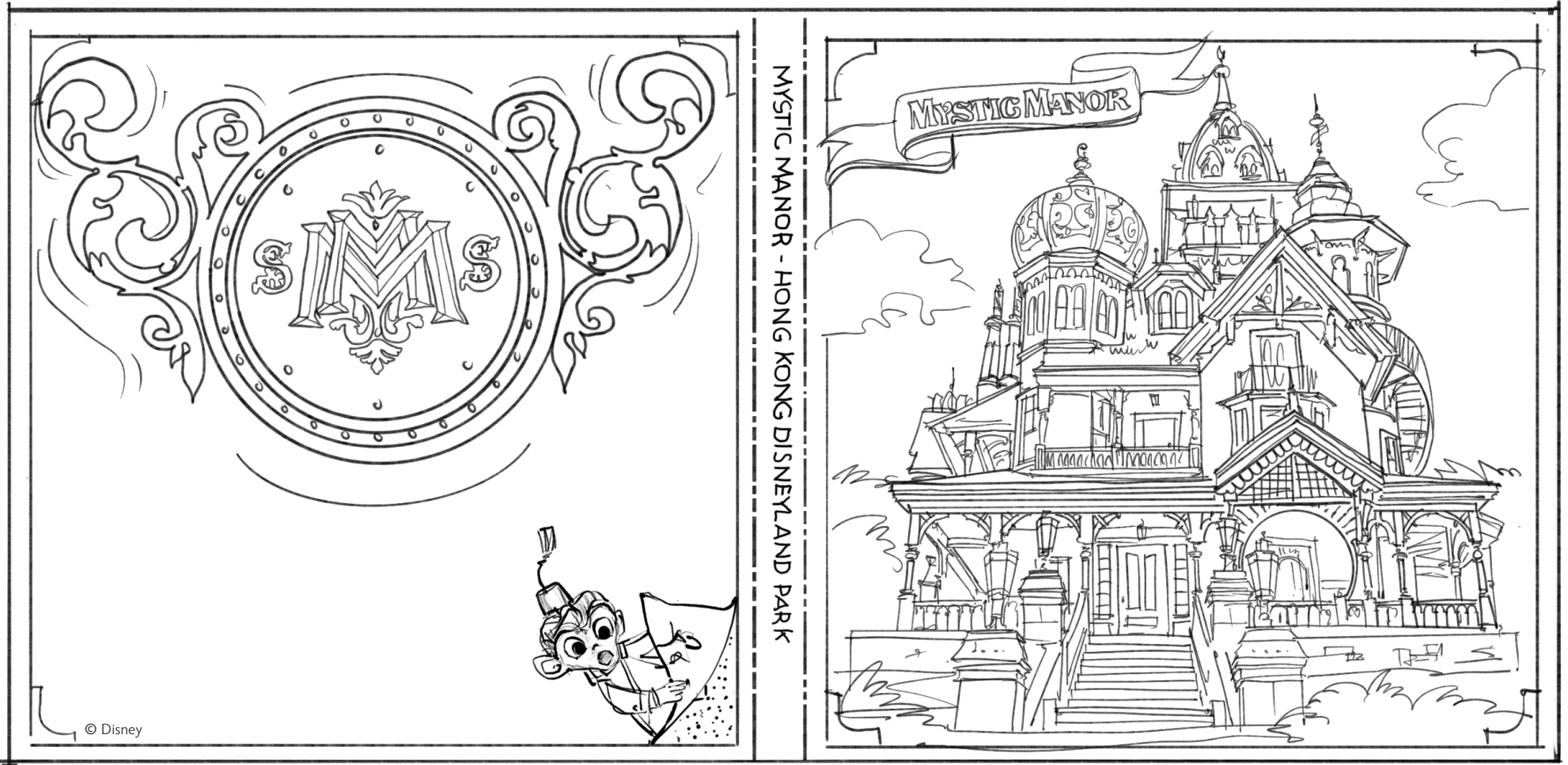
## MYSTIC MANOR

Sheet Number: 19

Glue back to back of Scene 6 Background (Right)

The ribbon loop should come out of this end!

Glue back to back of Scene 1 Background (Left)



BOOK COVER

Don't forget to sandwich your ribbons or strings in between the cover and the book!

Note: if you want additional stiffness in your cover, you can glue it to cardboard before you glue it to the book!